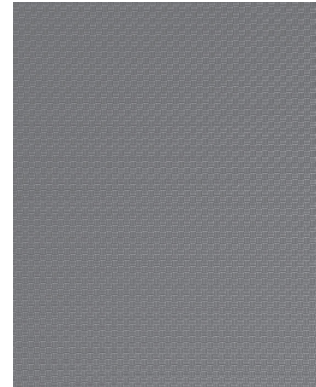


GOOD NEWS. FOR YOUR FURNITURE.



**senosan® A48 SOFTFEEL 0001**  
embossing: 022HT



## PRODUCT INFORMATION

### SENOSON® A48 SOFTFEEL 0001

#### PRODUCT

Coextruded ABS furniture film with a silk matt and non-slip TPU top layer.

#### PROPERTIES | ADVANTAGES

- Rubbery, pleasant feel
- Scratch resistant
- Chemical resistant
- Anti-slip properties

#### TECHNICAL PROPERTIES

Property	Value
Density	1.05 g/cm <sup>3</sup>
Abrasion resistance (H18, 550g, load 1000 cycles)	10 mg 100 U/min (DIN 53754)

#### PRODUCT DETAILS

Thickness: 1.00 mm  
 Width: up to 1,300 mm  
 (special formats / rolls on request)  
 Colour: on request  
 MOQ: 5,000 m<sup>2</sup>  
 Delivery time: on request

#### STOCK PROGRAMME

Size: 2,800 x 1,300 x 1.00 mm  
 Colour: grey 85590  
 Embossing: 022HT  
 Delivery time: app. 2 weeks from order date on  
 (ex works)

#### PRICE

On request.

#### POSSIBLE APPLICATIONS

Insert for drawers in kitchen and bath;  
 suitable for thermoforming.